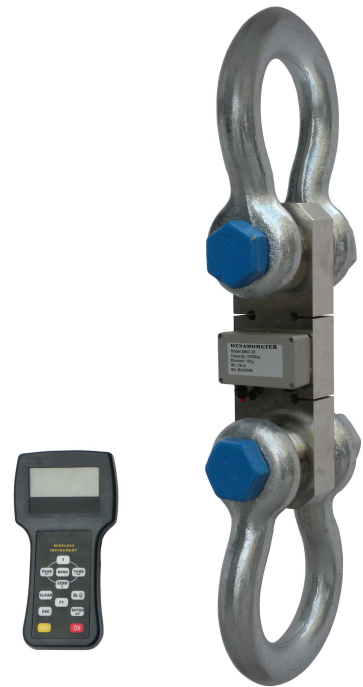


EBW Tension Link Load Cell

Technical data

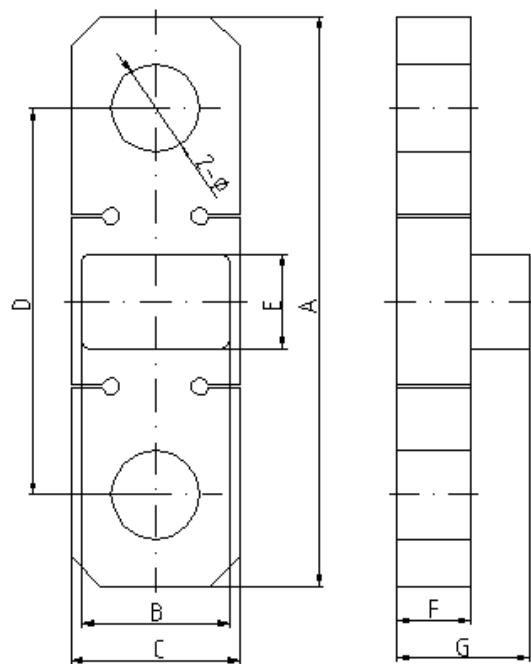
Accuracy Standard	According to OIML class III
Indicator Display	25mm(1") 5digits LCD
Water Proof Class	IP66
Zero Range	4% F.S.
Tare Range	100% F.S.
Stable Time	≤5 seconds
Overload Indication	100% F.S. + 9e
Max. Safety Load	125% F.S.
Ultimate Load	400% F.S.
Tension link battery Life	Continuous using 90 hours after recharged
Tension link battery type	Standard 18650 Lithium battery, 3.7V/3100mAh
Indicator Battery	SC3300mAh NiH Battery. 1.2Vx4
Tension link Charger	DC4.2V/1000mA
Nominal operating Temp.	- 10 ° ~ + 40 °
Operating Humidity	≤85% RH under 20 °
Wireless Distance	100M without obstacle
Wireless Frequency	433MHz



Specification

MODEL	Max. capacity (kg)	Min. weigh (kg)	Division (kg)	Total display counts (n)
EBW-5	5000	40	2	2500
EBW-10	10000	100	5	2000
EBW-20	20000	200	10	2000
EBW-30	30000	200	10	3000
EBW-50	50000	400	20	2500
EBW-100	100000	1000	50	2000
EBW-150	150000	1000	50	3000
EBW-200	200000	2000	100	2000

Appearance illustration



MODE L	Cap.	A	B	C	D	E	F	G	2-Φ	N.W
EBW-5	5000	190	110	60	137	65	30	70	27	2.6
EBW-	10000	245	110	70	168	65	36	76	41	4.3
EBW-	20000	312	110	94	206	65	45	85	54	8.5
EBW-	30000	370	110	114	246	65	50	90	60	14
EBW-	50000	460	110	140	309	65	60	100	73	25
EBW-	10000	580	110	180	389	65	80	120	99	53
EBW-	15000	690	110	220	456	65	90	130	112	89
EBW-	20000	800	110	250	534	65	100	140	134	128